




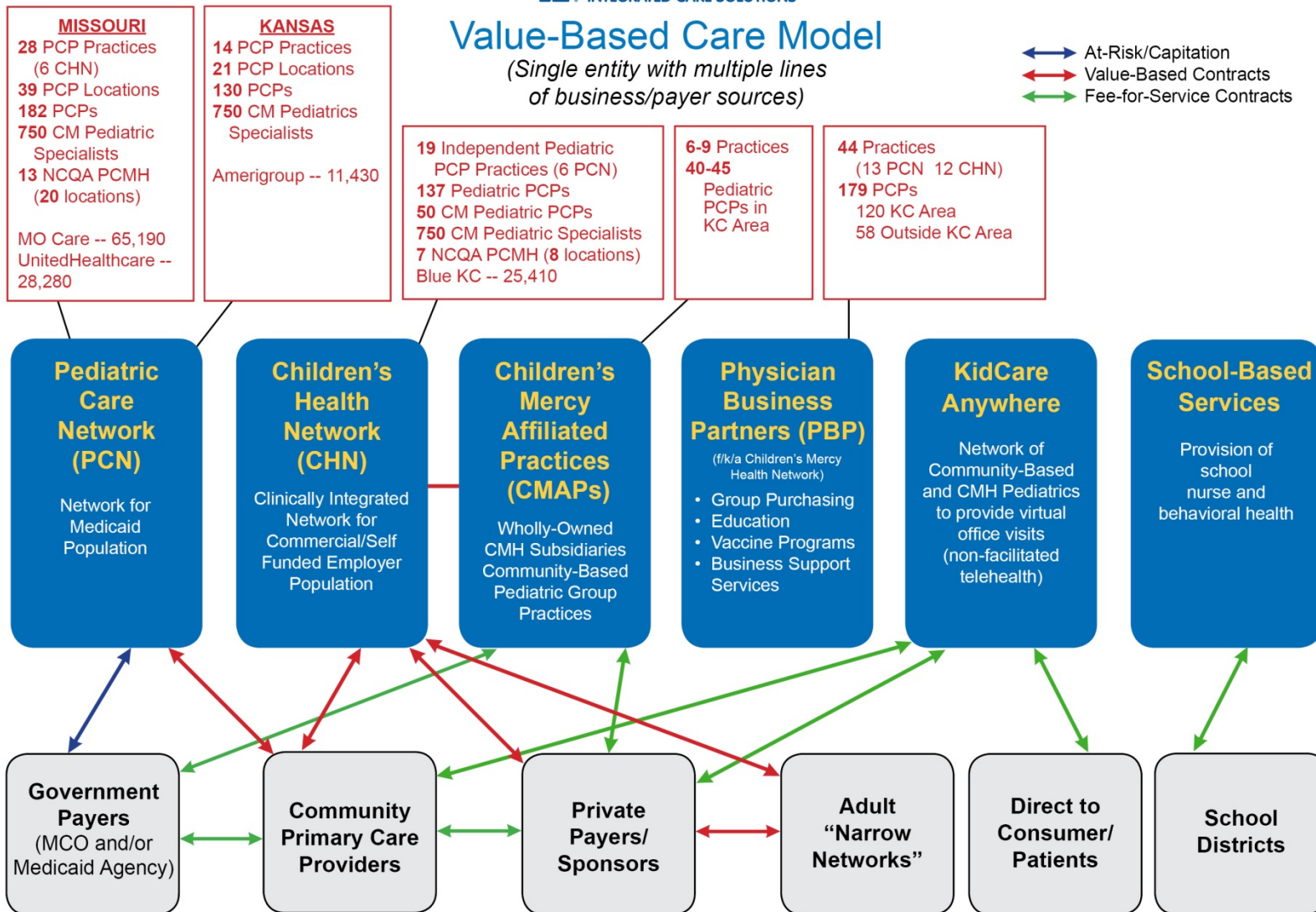
Value-Based Care Model

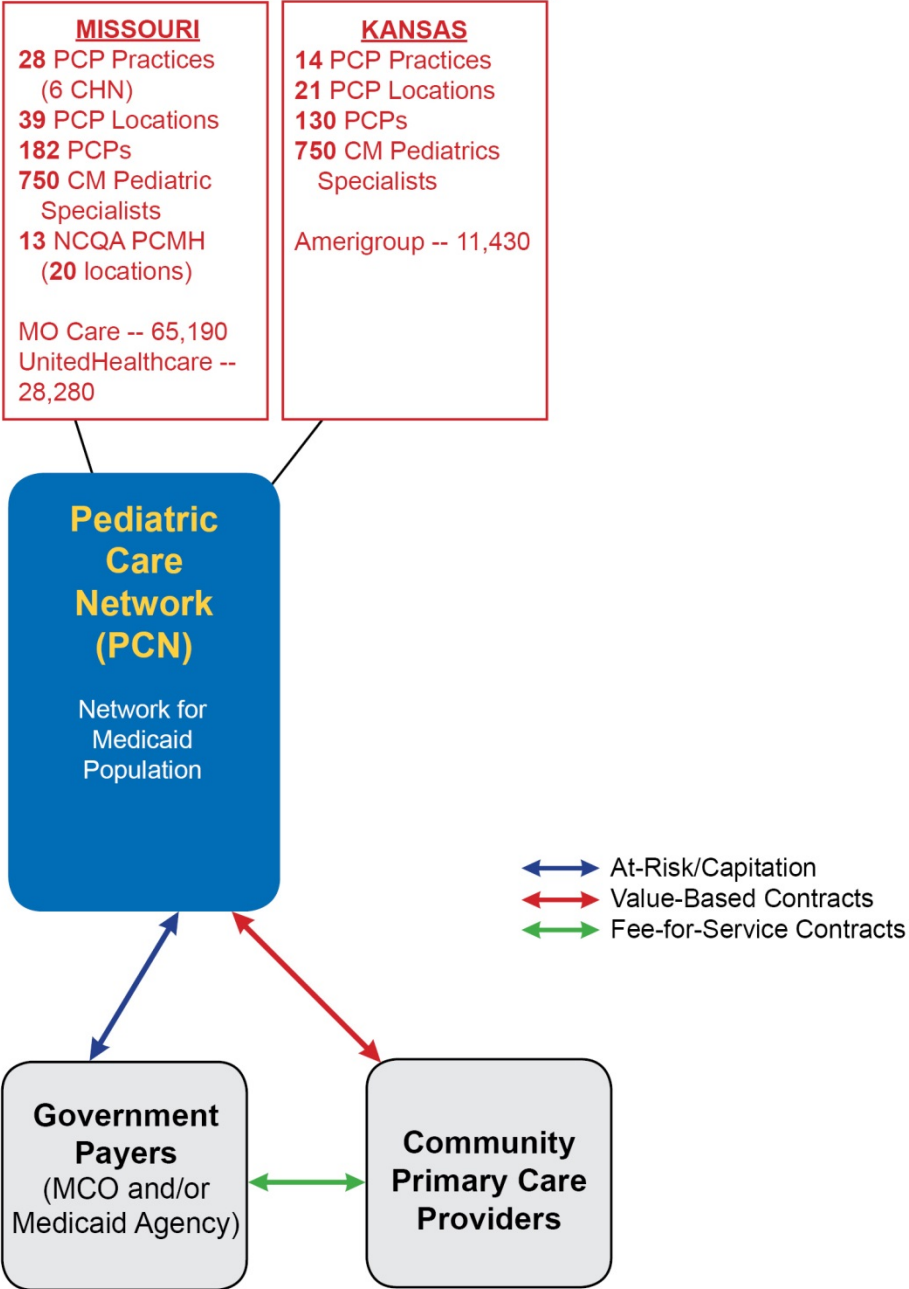
Presentation by Bob Finuf

Value-Based Care Model

(Single entity with multiple lines of business/payer sources)

 At-Risk/Capitation
 Value-Based Contracts
 Fee-for-Service Contracts



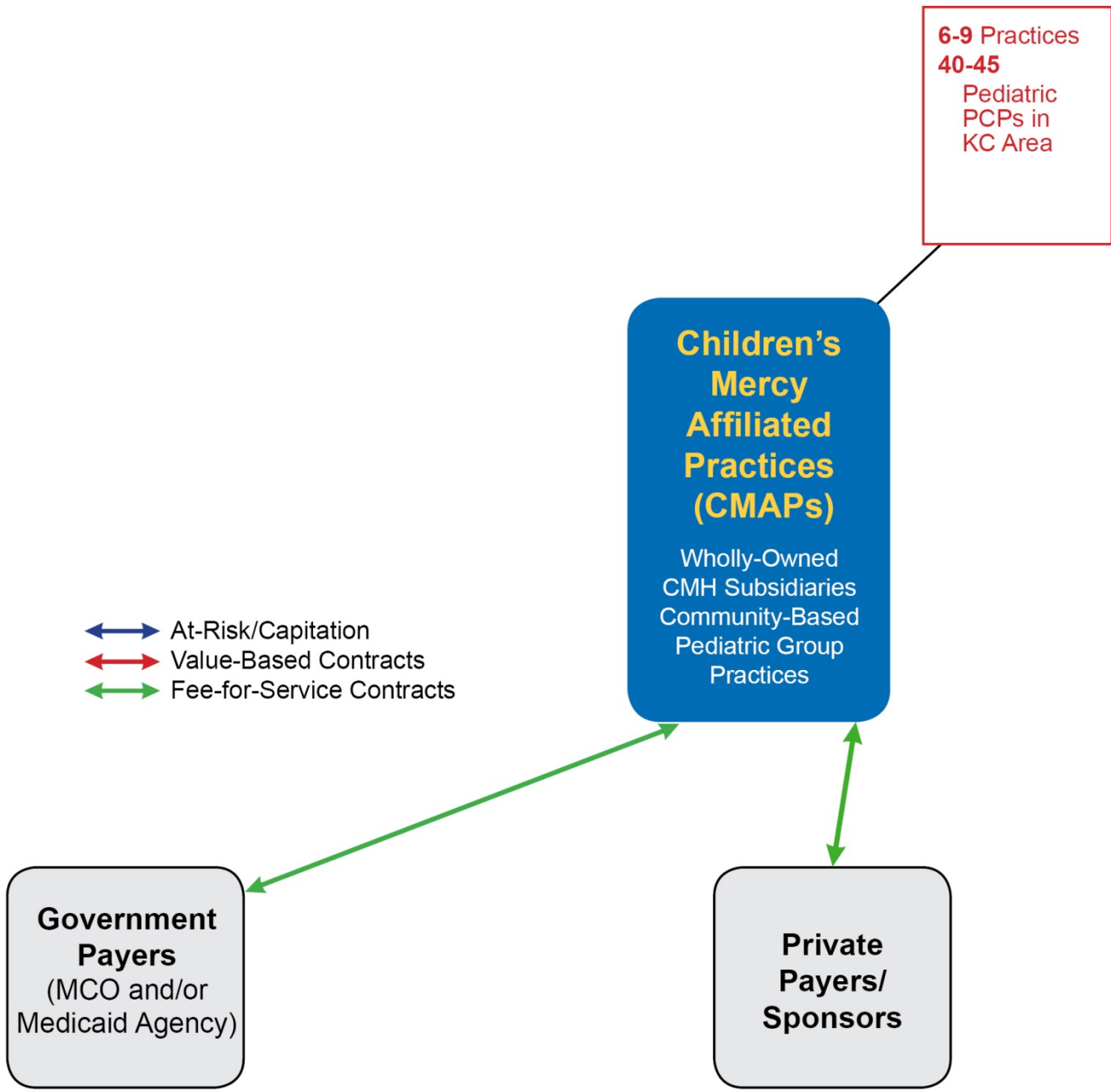


19 Independent Pediatric PCP Practices (6 PCN)
137 Pediatric PCPs
50 CM Pediatric PCPs
750 CM Pediatric Specialists
7 NCQA PCMH (8 locations)
Blue KC -- 25,410



↔ At-Risk/Capitation
↔ Value-Based Contracts
↔ Fee-for-Service Contracts



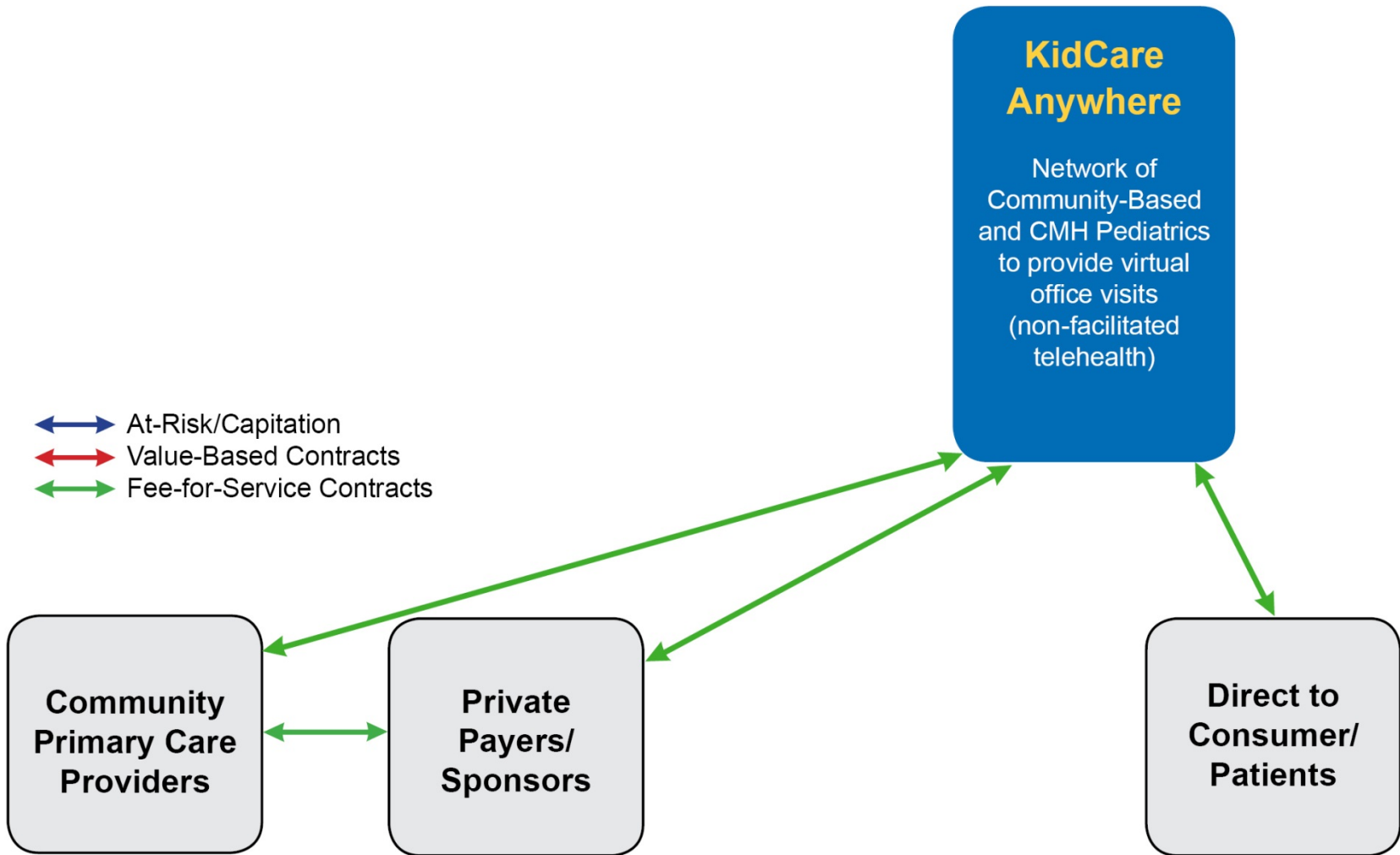


44 Practices
(13 PCN 12 CHN)
179 PCPs
120 KC Area
58 Outside KC Area

Physician Business Partners (PBP)

(f/k/a Children's Mercy
Health Network)

- Group Purchasing
- Education
- Vaccine Programs
- Business Support Services



School-Based Services

Provision of
school
nurse and
behavioral health



School
Districts