



@hoahimss



#HITTrendsKC



@Missouri_HIMA



Randy House
Vice President of Health Informatics
Saint Luke's Health System



Lynsey McNeal
Director Data of Governance
Saint Luke's Health System

Advancing along the Information Governance Maturity Curve

Randy House, Vice President Health Informatics
Lynsey McNeal, Director Data Governance

September 14, 2016



Saint Luke's Hospital was founded in
October 1882

Charity care was an important aspect of
the mission

Designated teaching institution





Today, Saint Luke's Health System is a not-for-profit faith-based health system, an integrated system of care consisting of:

- Ten hospitals
- Home Care and Hospice
- Physician offices and clinics in a 100 mile radius
- Employing over 10,000 people



“Data is a new class of economic asset,
like currency and gold.”

Source: World Economic Forum 2012

Data Volume Explosion

EHR systems enabling
interoperable HIE/
data sharing

Patient records with
longitudinal data
across the care
continuum



Big Data refers to “a collection of data sets that are so large and complex that it becomes difficult to process using generally available database management tools or traditional data processing applications.”

Source: Wikipedia

Big Data - When the volume, velocity, variability, and variety of data exceed an organization's storage or compute capacity for accurate and timely decision making.

Source: SAS White Paper, "Big Data Meets Big Analytics"

THRIVING IN THE BIG DATA ERA



Before Data Governance:

Our analytical systems didn't always incorporate common definitions of elements/metrics

Analysts accessed data from silo systems with different purposes and with no integration.

A need for advanced analytics and decision support tools was evident

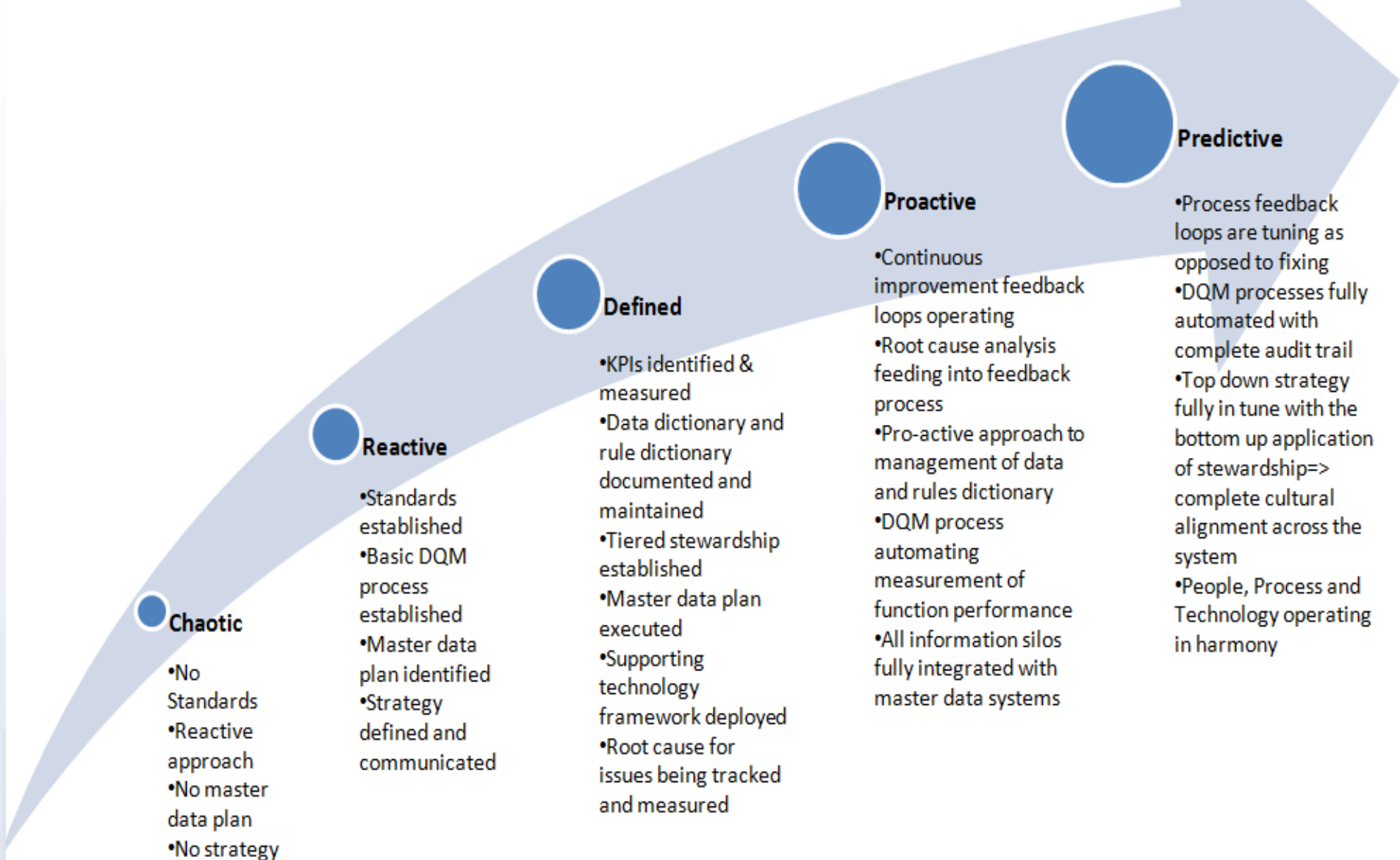
Effective dashboards for standard information visualization and analysis were lacking.

Data Governance

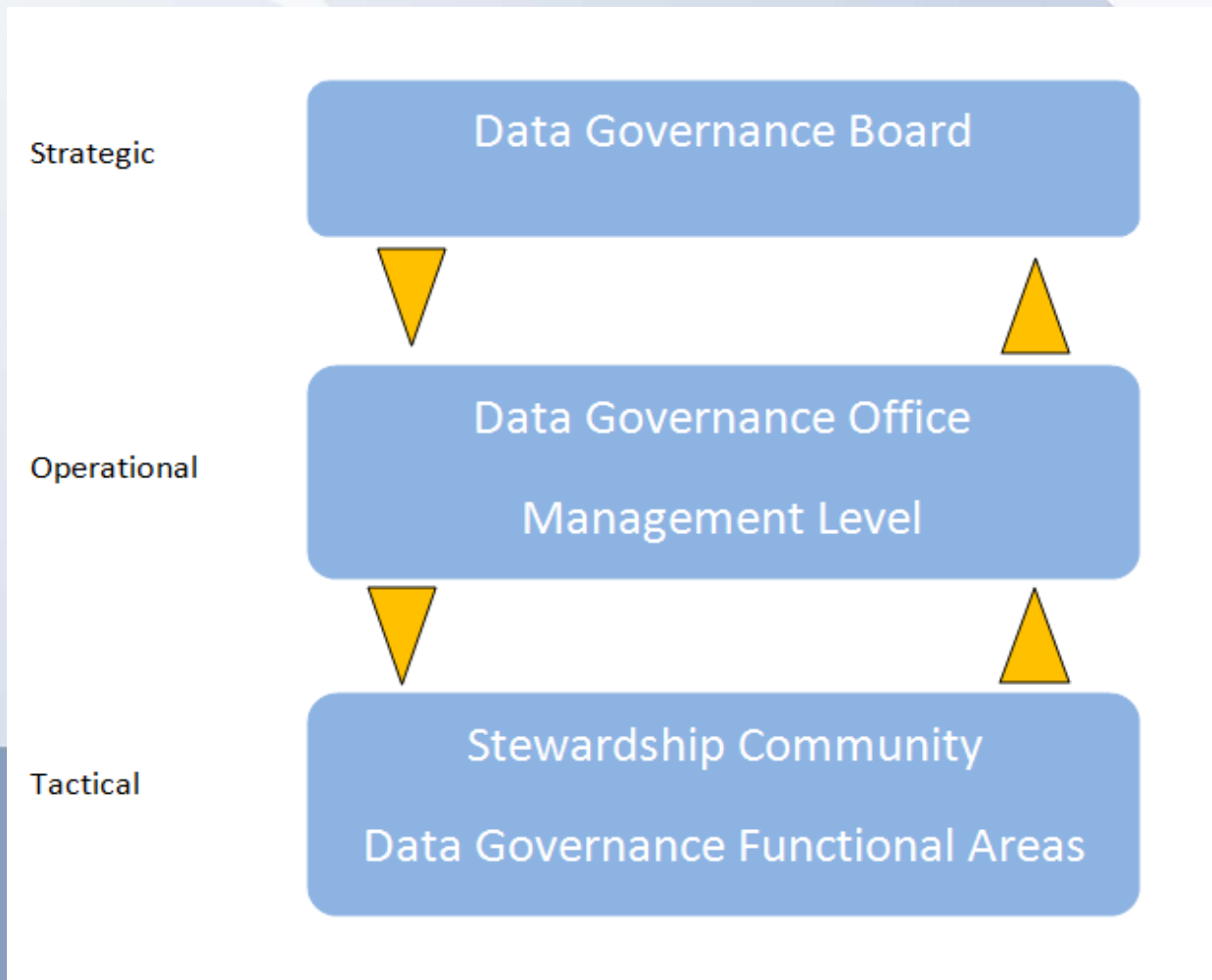
Data Governance

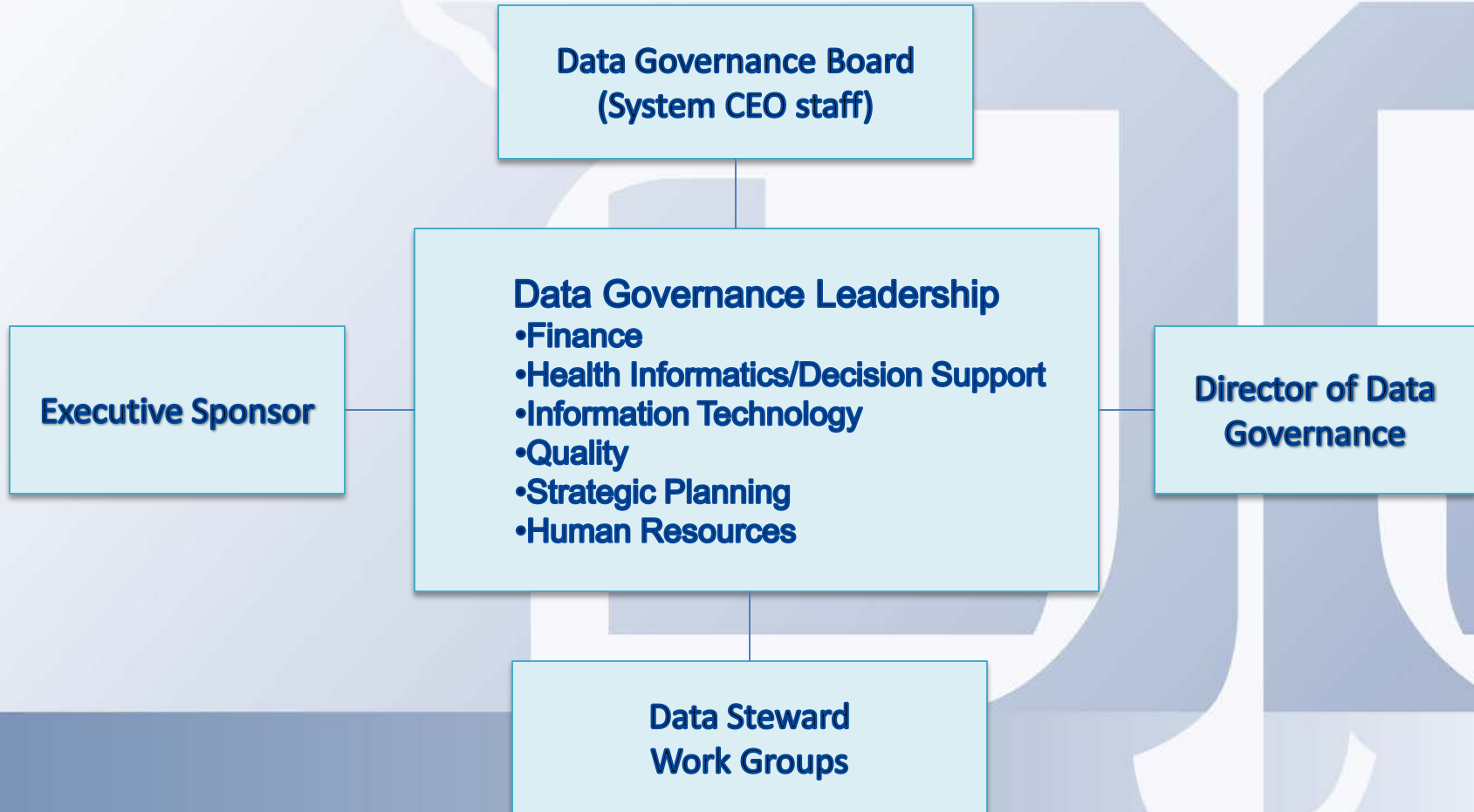
- “SLHS expects to realize improved data consistency and quality, enhanced access to metadata – where it resides, who owns it and how to use it, improved communication about data assets, and closely support SLHS Strategic goals and data governance objectives.” SLHS DG Charter, 2012
- Responsible for the implementation and oversight of the Health System data management goals, standards, practices processes, and technologies.
- Identifying a “Single Source of Truth” for each data element
- Key Elements of Data Governance
 - Document standards for data sources and definitions
 - Establish ownership of data quality management
 - Streamline and automate data collection and reporting
 - Create enterprise-wide accountability

The Data Management Continuum

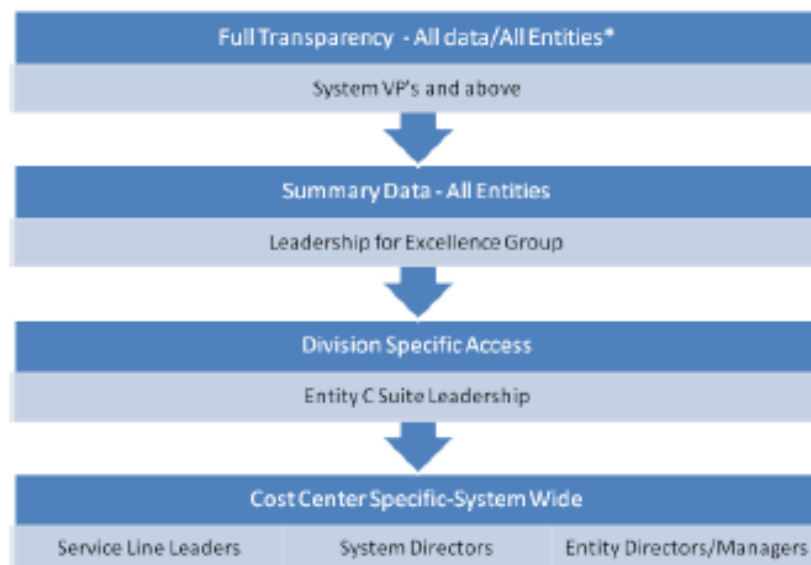
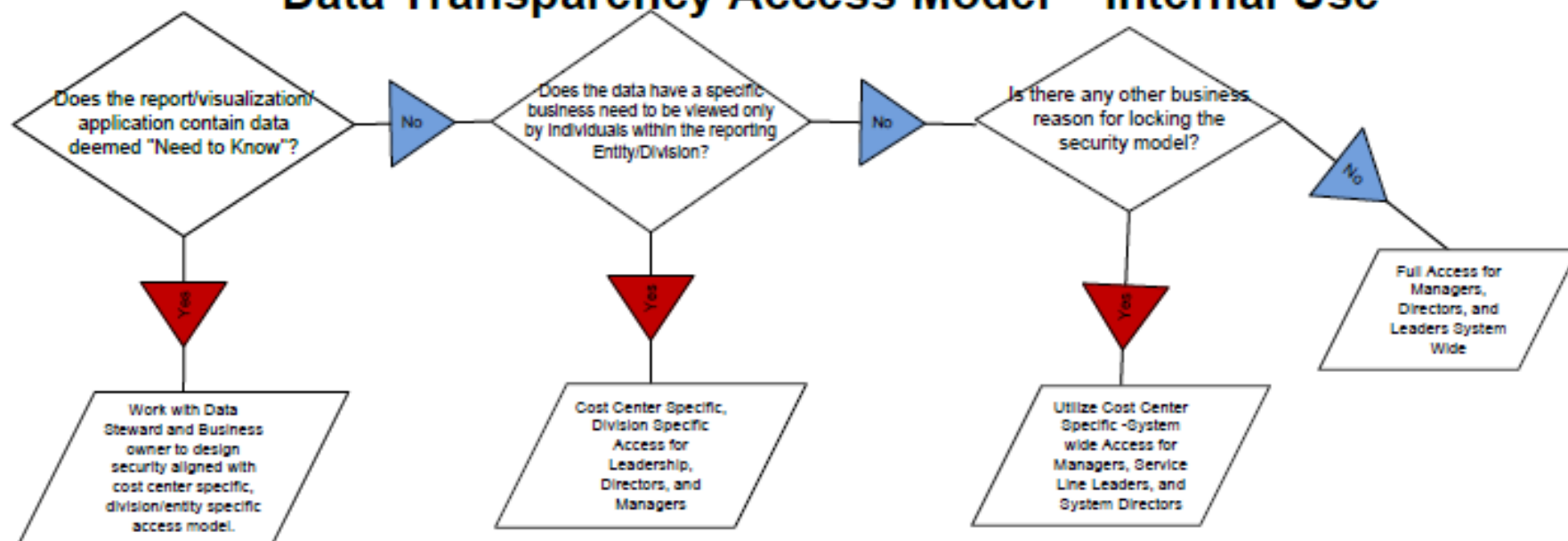


Our Data Governance Structure





Data Transparency Access Model – Internal Use



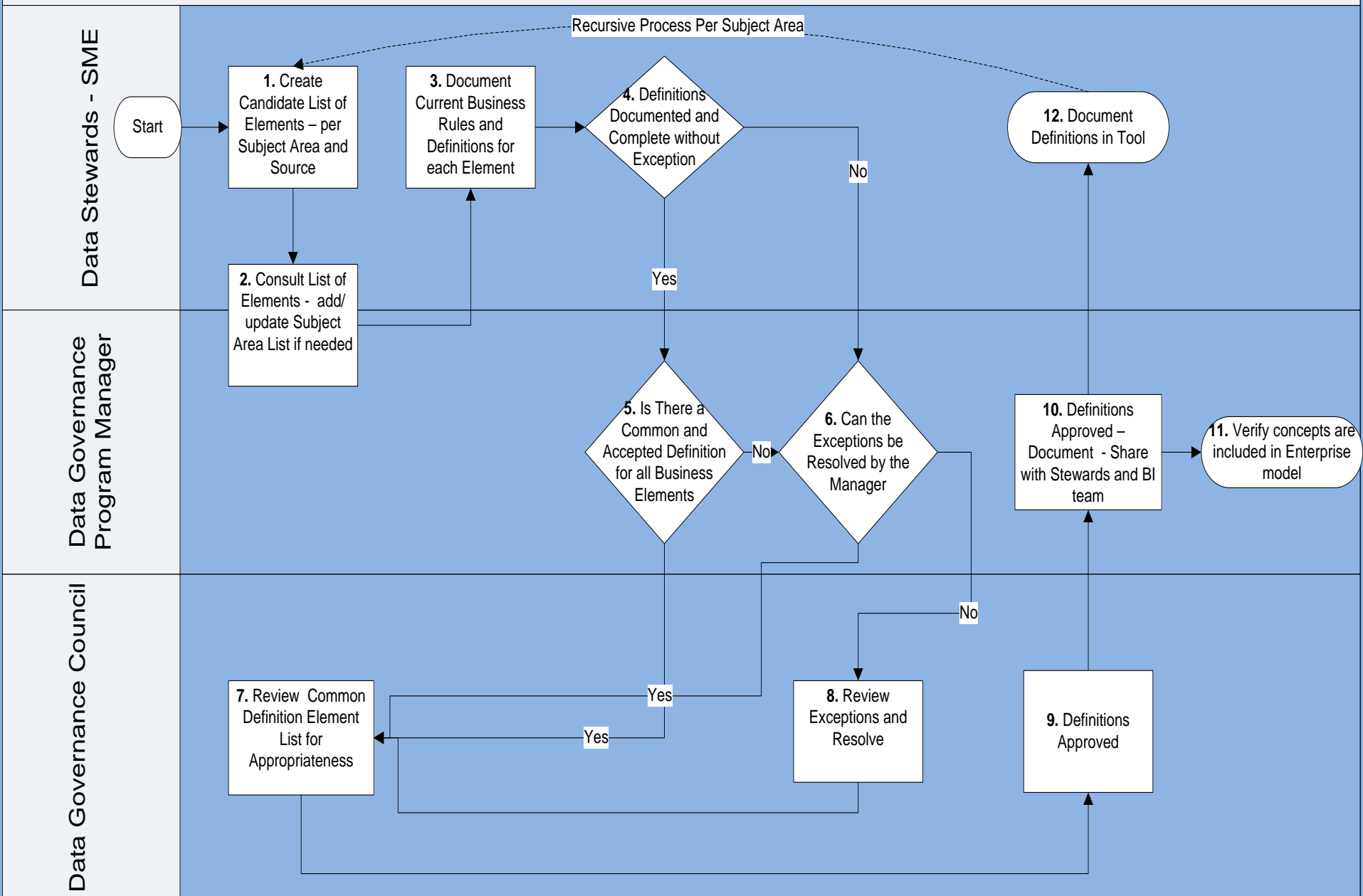
"Need to Know" Information may contain some of the following:

- Cost Data
- Employee Specific Data
- Physician Specific Data
- PHI
- Other Potential Risk Information
- Strategic Data

Data Stewardship

- Executive Sponsor – must have working business knowledge of the processes
- Data System Expert – Individual(s) who work with the source system directly
- Subject Matter Expert – must work with the source system as a consumer of the data

Master Element Selection and Create Common Definitions (*Recursive Process Per Subject Area*)



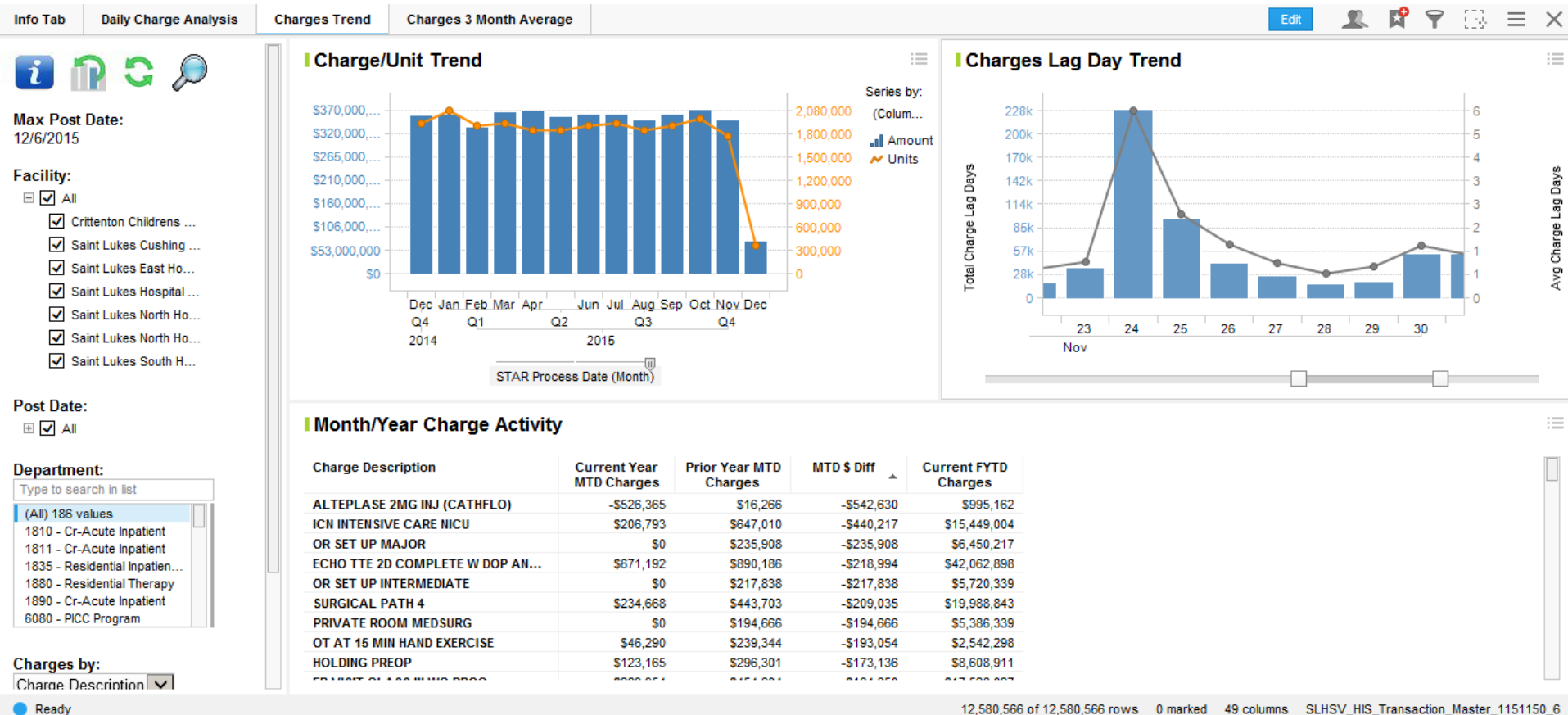
Tools for Data Governance

- Data Dictionary
- Data Marts/Data Warehousing
- Advanced Analytics

Data Dictionary Example

| Measure Name | AKA or Alias | Element, Qualified Element, or Formula | Description |
|----------------------------------|--------------|--|---|
| Acute Admissions | ACUTE | Qualified Element | Admissions for inpatient encounters excluding the following patient types: Newborn,Mental Health, Rehab, NICU |
| Filled FTEs | | Qualified Element | The number of Full Time Equivalent positions employed as of a particular point in time as indicated by the employee demographics master. FTEs can be subdivided into Active and LOA. |
| Open FTEs | | Qualified Element | The number of Full Time Equivalent positions that are open as of a particular point in time as indicated by data from the talent acquisition system |
| Headcount | | Qualified Element | A count of all filled positions reflected in the employee demographics master as of a point in time. Headcount can be subdivided into Active and LOA. |
| Budgeted FTEs | | Element | The number of FTEs as indicated by the budget. |
| Budgeted Productive Hours | | Qualified Element | The number of worked hours budgeted at the cost center level. Used to derive Budgeted Productive FTEs. |

Charge Analysis



Data Governance – Our Future

- Self-service data access
- Reports repository
- Predictive Modeling
- Integrated Reporting Platforms
- Access to data definitions within reports and visualizations
- Continue to reinforce data stewardship culture

Contact Information:

Randy House rhous@st-luke.org

Lynsey McNeal lmccneal@st-luke.org

Questions?