



The Growing Need for Health Information Analytics

Seth Jeremy Katz, MPH, RHIA
Assistant Administrator, Truman Medical Centers
President, MoHIMA

By PresenterMedia.com

Incomplete/
incomprehensible
records that don't tell
the patient's story

Inability to access and
use information for
planning purposes

Copy/paste;
allegations of
fraud & abuse

Security and
privacy breaches

An Information Management Crisis

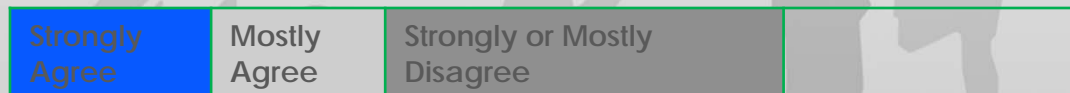
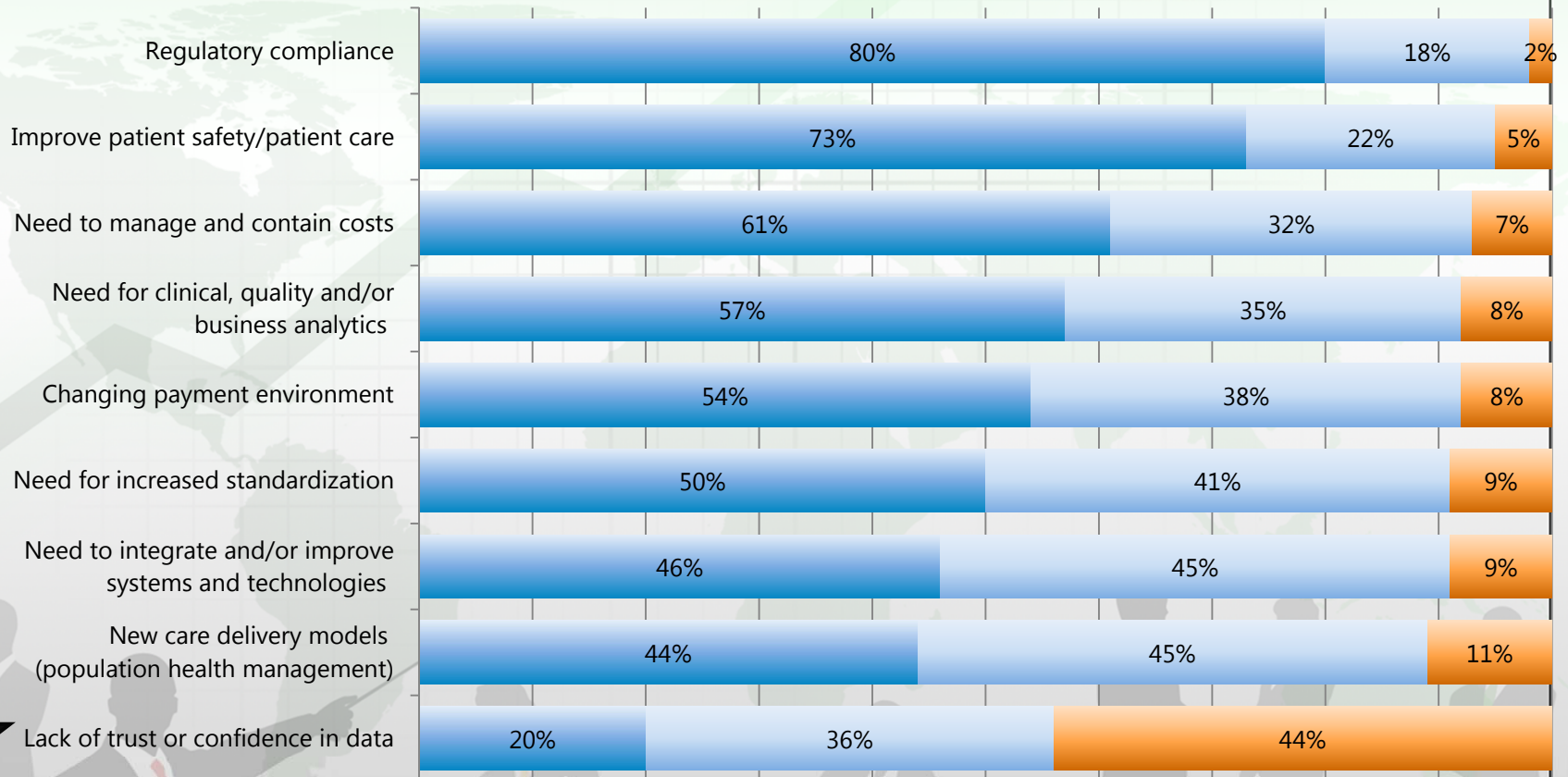
Health Information
Exchange challenges

5010/ICD-10
Implementation

Lack of clarity around
the record of care/
clinical health record

Drivers for Health Care IG

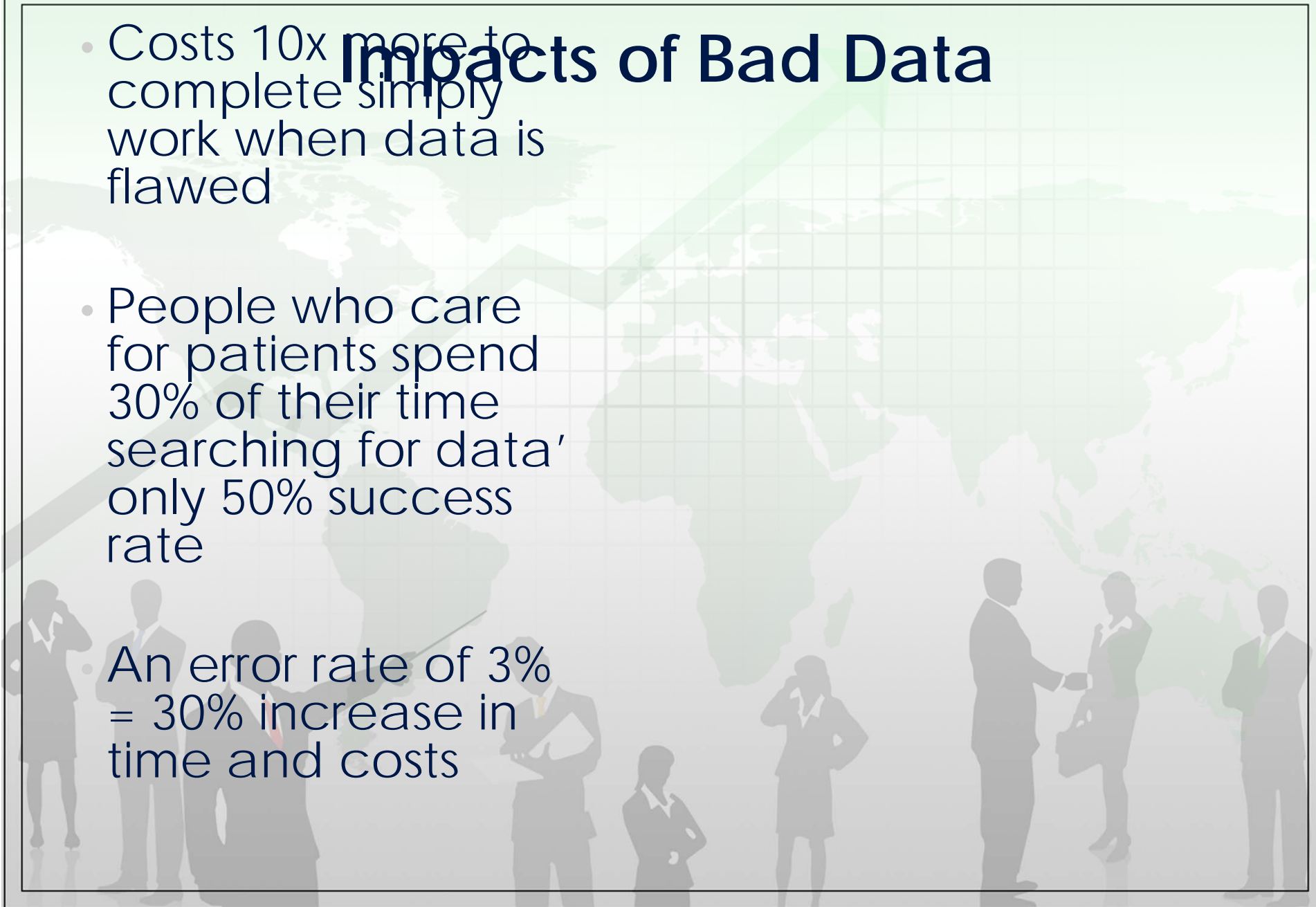
HIGH - HIGHEST



Cohasset Associates / AHIMA 2014 "Information Governance in Healthcare – A Call to Adopt Information Governance Practices". <http://www.ahima.org/IGwhitepaper>.

Impacts of Bad Data

- Costs 10x more to complete simply work when data is flawed
- People who care for patients spend 30% of their time searching for data' only 50% success rate
- An error rate of 3% = 30% increase in time and costs



Vision, Desired State & Benefits

Better Decisions Better Performance Better Outcomes

- At-a-glance, **real-time view** of clinical, operational, financial and strategic performance
- Focused, aligned, agile, proactive and sustained decision-making
- **Actionable analytics and measureable results** for business priorities

Easy to Access Easy to Understand Easy to Use

- One-stop shopping
- User-friendly
- Faster response on data needs

HIM DNFC Report

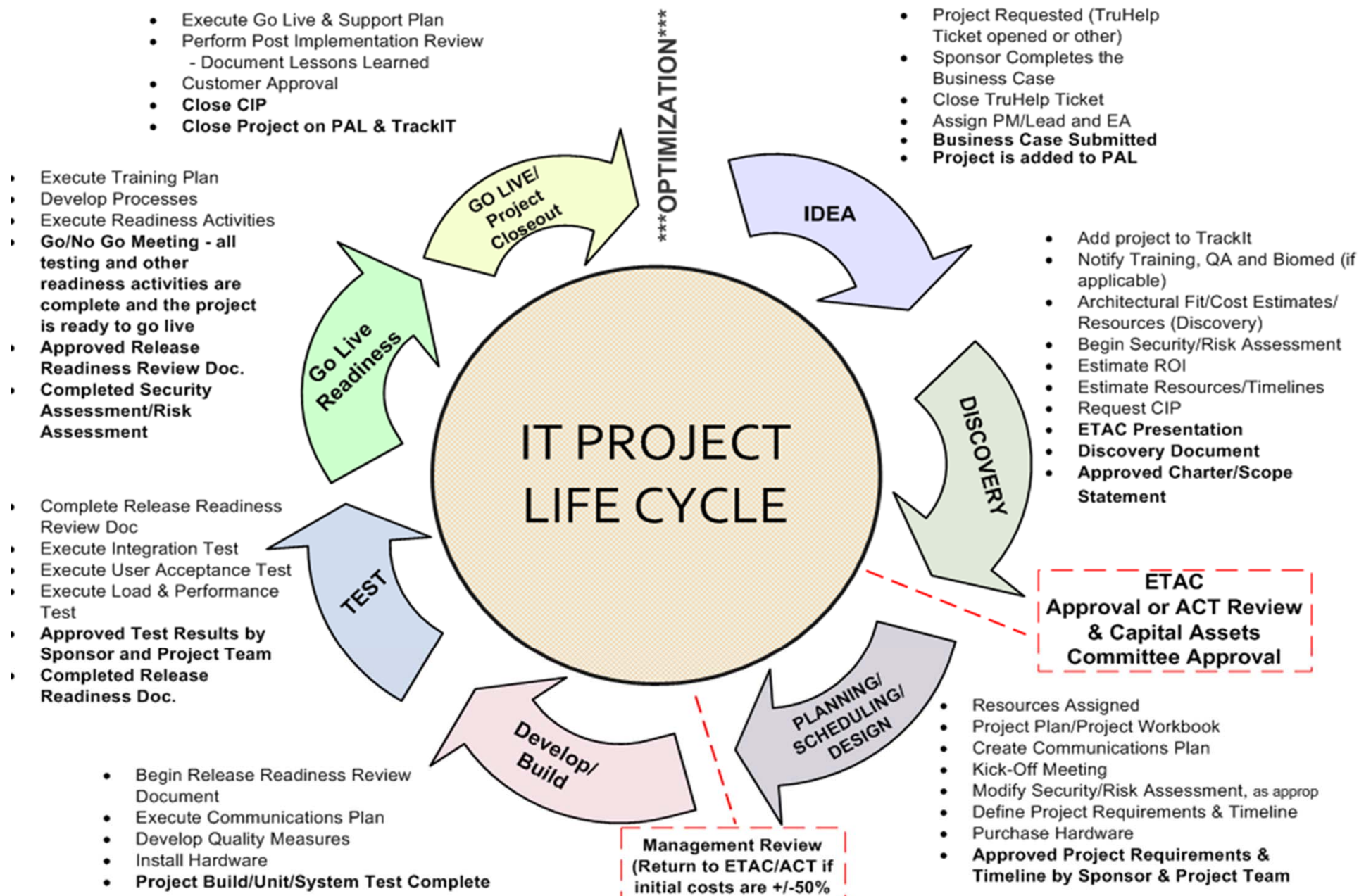
Hospital Hill				Element	Lakewood			
Target	07/14/2015	Difference	%		Target	07/14/2015	Difference	%
\$ 1,500,000		\$ (1,500,000)	-100%	Inpatient Dollars Pending	\$ 500,000		(500,000)	-100%
200		(200.00)	-100%	Inpatient Accounts Pending	100		(100)	-100%
90%		-90%	-100%	Percentage of Accounts w/in 4 B. Days	90%		-90%	-100%
\$ 2,500,000		(2,500,000)	-100%	Outpatient Dollars Pending	\$ 1,000,000		\$ (1,000,000)	-100%
6340		(6,340)	-100%	Outpatient Accounts Pending	3130		(3,130)	-100%
90%		-90%	-100%	Percentage of Accounts w/in 4 B. Days	90%		-90%	-100%
\$ 1,324,724		(1,324,724)	-100%	Ave Daily Charge vs Dollars Pending	\$ 462,819		(462,819)	-100%
4		(4.00)	-100%	Dollar Days	4		(4.00)	-100%

Hospital Hill				Element	Lakewood			
Target	PRIOR MONTH	Difference	%		Target	PRIOR MONTH	Difference	%
\$ 1,500,000		\$ (1,500,000)	-100%	Inpatient Dollars Pending	\$ 500,000		(500,000)	-100%
200		(200.00)	-100%	Inpatient Accounts Pending	100		(100)	-100%
90%		(0.90)	-100%	Percentage of Accounts w/in 4 B. Days	90%		-90%	-100%
\$ 2,500,000		(2,500,000)	-100%	Outpatient Dollars Pending	\$ 1,000,000		\$ (1,000,000)	-100%
6340		(6,340)	-100%	Outpatient Accounts Pending	3130		(3,130)	-100%
90%		(0.90)	-100%	Percentage of Accounts w/in 4 B. Days	90%		-90%	-100%
\$ 1,324,724		(1,324,724)	-100%	Ave Daily Charge vs Dollars Pending	\$ 462,819		(462,819)	-100%
4		(4.00)	-100%	Dollar Days	4		(4.00)	-100%

Hospital Hill				Element	Lakewood			
06/30/2015	07/14/2015	Difference	%		06/30/2015	07/14/2015	Difference	%
		\$ -	#DIV/0!	Medicare (M, P, PI) Dollars			\$ -	#DIV/0!
		-	#DIV/0!	Medicare (M, P, PI) Charts			-	#DIV/0!
		-	#DIV/0!	Medicaid (X, XK, XO) Dollars			-	#DIV/0!
		-	#DIV/0!	Medicaid (X, XK, XO) Charts			\$ -	#DIV/0!
		-	#DIV/0!	Self Pay (CP, K, MP, OC, PP, S, SC, SI, SP) Dollars			-	#DIV/0!
		-	#DIV/0!	Self Pay (CP, K, MP, OC, PP, S, SC, SI, SP) Charts			-	#DIV/0!

IT Project Life Cycle, Required Check Points

Revision 8/28/12



Clinical & Business Intelligence

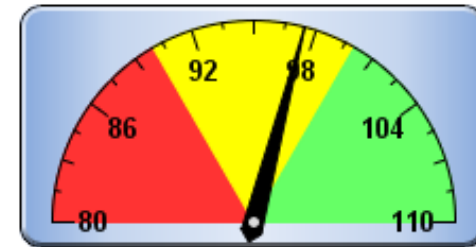
CLINICAL/FINANCIAL MEASURES for Ambulatory ISCORECARDS

- 50 Practice Management Scorecards
- Conglomerate Quality Score
- NCQA Medical Home Scorecard (national benchmarks)
- EMR benefits:
 - Transcription
 - Meaningful Use
 - Patient/Record Matching
 - Document Imaging
 - Medication Errors
 - Patient Portal/HIE
- A1C, LDL, Arterial Pressure
- Combined Clinical/Financial Analytics

Hand Hygiene

% of Target

Actual: 97.43

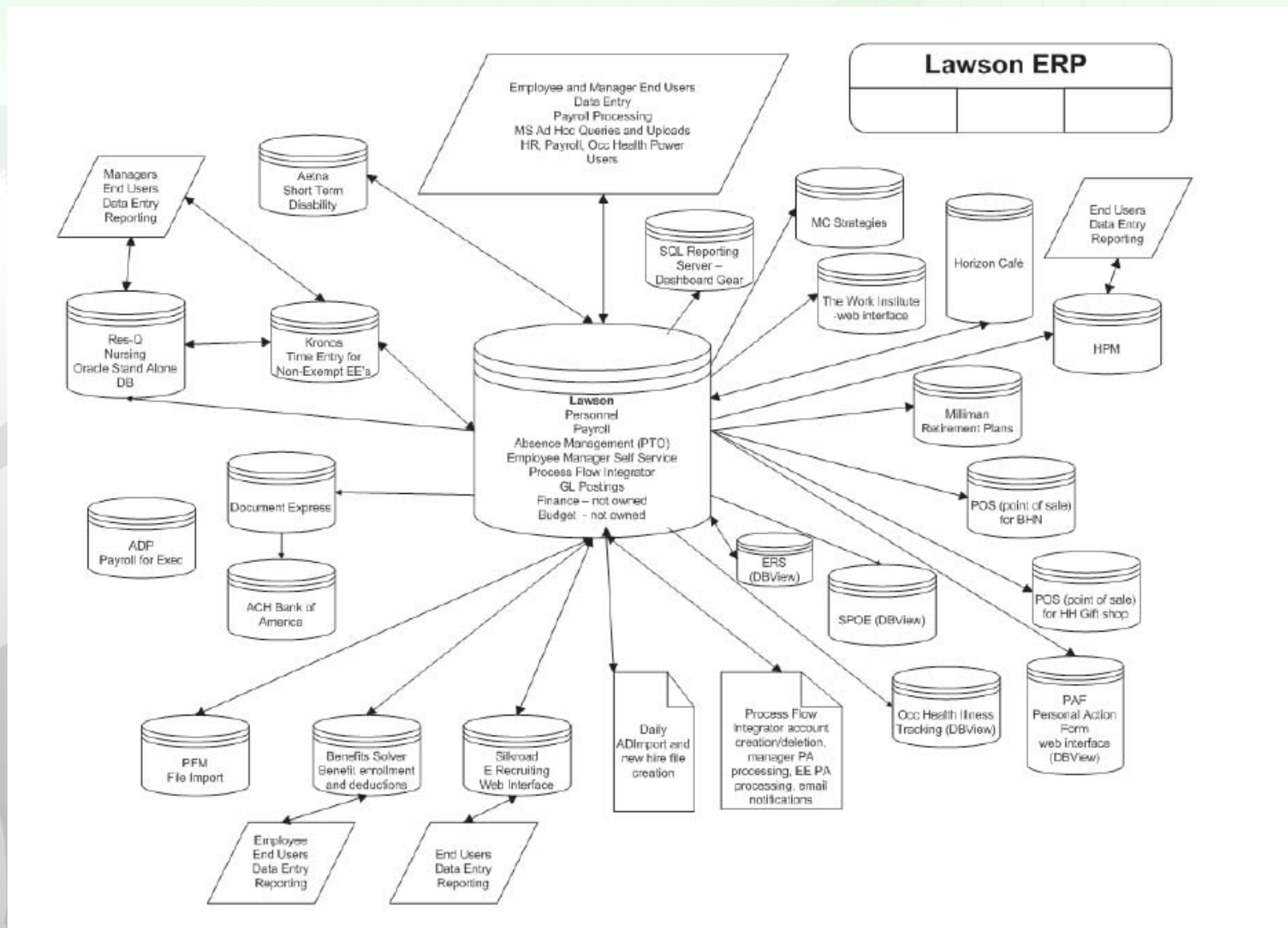


Scorecard: X-Archive Practice Management Scorecard - HH

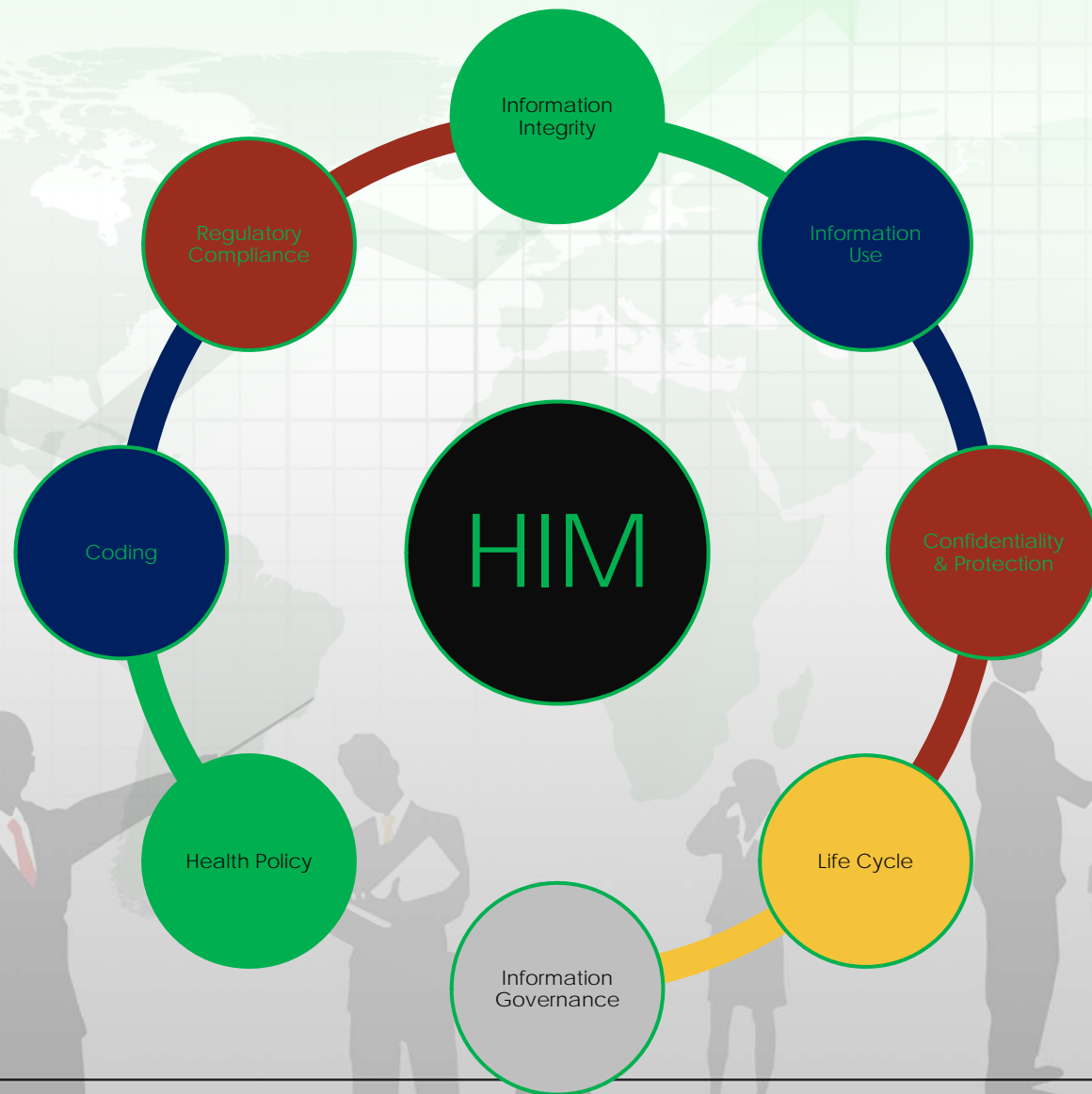
FLEXIBLE FEATURES:

- Fully Drillable, unlimited drills
- Data display/drills/graphs can be changed by end-user to customize to user need
- At-a-glance visibility in dashboards
- Organization-wide transparency

Data Flows



Health Information Management Professionals



Health Information Jobs

- HIM related jobs are projected to be one of the 20 fastest growing occupations in the US ~ Bureau of Labor Statistics
- Diverse opportunities
- Work in healthcare but not directly with patients *

Aptitude for science, management, law and electronics

- Enjoy working with physicians, nurses, lawyers, administrators and executives